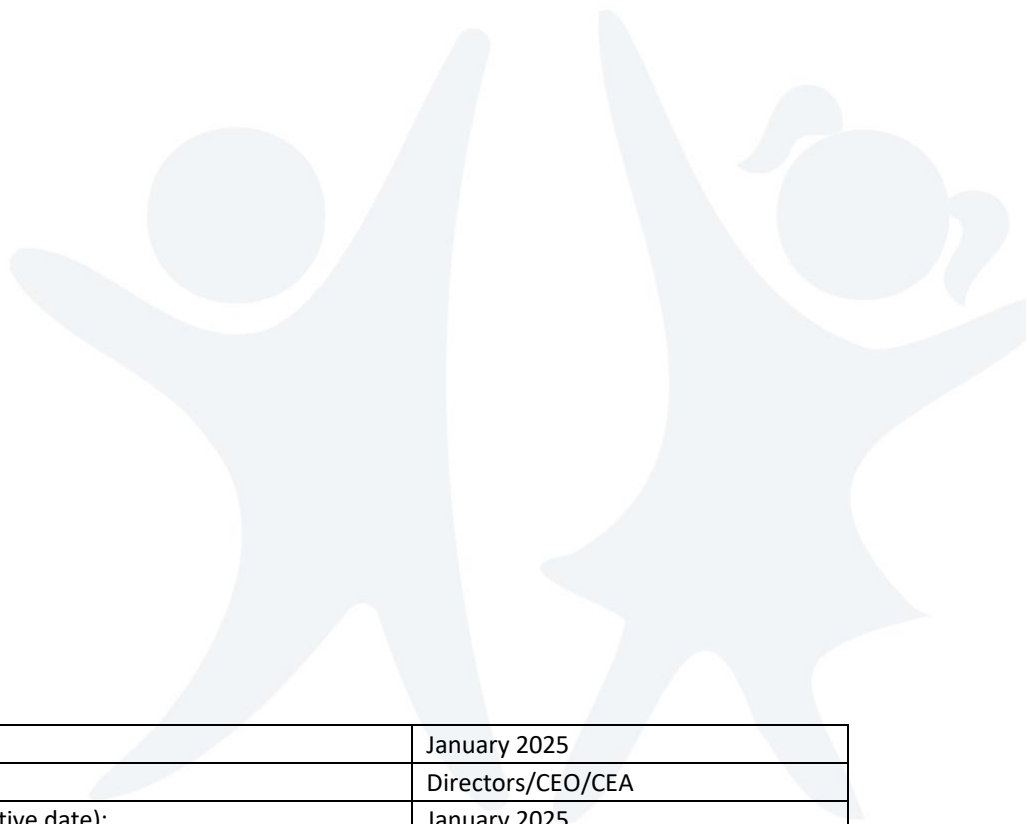


Manor PSHCE Policy



Date approved:	January 2025
Approved by:	Directors/CEO/CEA
Date adopted by School (i.e. effective date):	January 2025
This policy is scheduled for review on:	Every 3 years or on updates

Contents

Policy Statement	2
Scope.....	2
Our Vision.....	4
Our Ambitious Intent	4
Our Curriculum Implementation	6
Our Children’s Charter	7
Our Curriculum Impact	8
Breach of Policy.....	8



Policy Statement

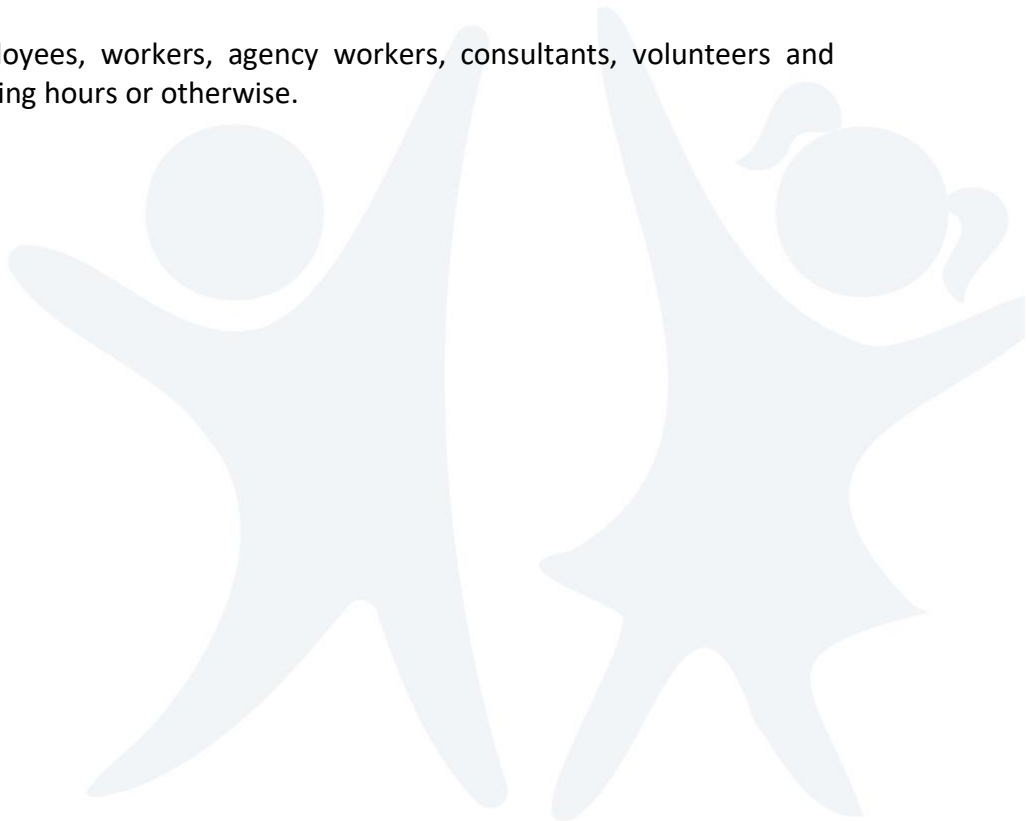
This policy outlines Manor Multi Academy Trust's ('we' / "our' / 'us') expectations of our employees' ('you') in relation to our Curriculum. Our curriculum is designed to develop inquisitive, independent thinkers with a love of learning. We understand that the curriculum, both within taught lessons and beyond them, should create an environment where questioning, academic risk-taking, divergent thinking and the freedom to learn from mistakes are all encouraged.

We are committed to equality and value diversity and inclusivity. As such we are committed to fulfilling our Public Sector Equality Duty (Equality Duty) obligations and expect all staff and volunteers to share this commitment.

This policy should also be applied in accordance with our curriculum policy, ICT Acceptable Use Policies and Procedures and Health and Safety Policy. Copies of all policies and procedures can be accessed via the All MAT Staff area on Teams.

Scope

This policy applies to employees, workers, agency workers, consultants, volunteers and pupils, whether during working hours or otherwise.



Our Vision



Vision

Our vision is to create extraordinary learning, for all of our children to be proud of their achievements, develop resilience and grow as learners so that they can discover their place in the world, where their possibilities are endless!

Our Ambitious Intent

Personal, social and health education (PSHE) and citizenship (C) Education enables pupils to develop the knowledge and understanding they need to lead confident, healthy, independent lives and to become informed, active responsible citizens.

At Manor Primary School, our PSHCE curriculum will support the moral, cultural, mental and physical development of our pupils, it will build cultural capital and educate them for experiences in school and later in life. We believe that children should have opportunities to engage with current issues so that they can make clear informed choices about new challenges and critical opportunities that will arise as they grow up and become responsible adults.

Our curriculum provides children with a wealth of learning opportunities and experiences across and beyond the classroom. Children are actively encouraged to contribute fully to the life of their school and community. Children will learn to recognise their own worth, work well with others and become increasingly responsible for their own learning. Children will have a clear understanding of their role as a citizen, not only in school but in the wider community and in the world beyond.



In our PSHCE curriculum, we ensure that both **substantive and disciplinary knowledge** is built upon year on year.

Substantive knowledge - is the subject knowledge and explicit vocabulary used to learn about the content.

Disciplinary knowledge -is the interpretation of themselves and how to support themselves and others through changes.

Key Concepts:

- Identity
- Social skills and relationships
- Similarities and differences
- A healthy, balanced lifestyle
- Identification of risk and safety
- Diversity and equality
- Rights, responsibilities and consent
- Change and resilience
- Career
- Wellbeing

Secondary Key Concepts:

- **Emotional literacy** – Self-awareness, social skills, empathy, motivation, managing feelings
- **Responsibility** – Personal responsibility, responsibility towards others, relationships, world of work, staying safe, health
- **Resilience** – Developing strategies for resilience, ambition, personal best, managing emotions
- **Written and oral expression:** Using social and emotional literacy to confidently discuss personal experiences and the experiences of others in a variety of ways. Making comparisons and links, explanations, awareness of audience, using evidence to support statements

Our Curriculum Implementation

PSHCE is an integral part of our children's education and whilst it is a non-statutory subject, at Manor Primary School, we believe that children should learn about three core themes: - Health and well-being, Relationships and Living in the wider world.

Teaching Relationship and Sex Education as part of our PSHCE curriculum focuses on the characteristics of positive relationships in regard to friendship, family relationships and relationships with others. Our Relationship and Sex Education Policy has been developed in conjunction with parents, staff and children and is available on our School Website.

Our PSHCE schemes of work offer a broad, balanced, rich and vibrant curriculum that provides outstanding curriculum provision. Children are taught about drug education, financial education, relationship and sex education (RSE), the importance of physical activity and diet for a healthy lifestyle and about mental health and well-being to prepare our pupils for the opportunities, responsibilities and experiences of later life.

Organisation and Planning:

The curriculum will be taught with the consideration of the needs of all learners. Our curriculum will be exciting and will inspire children to nurture a passion for learning.

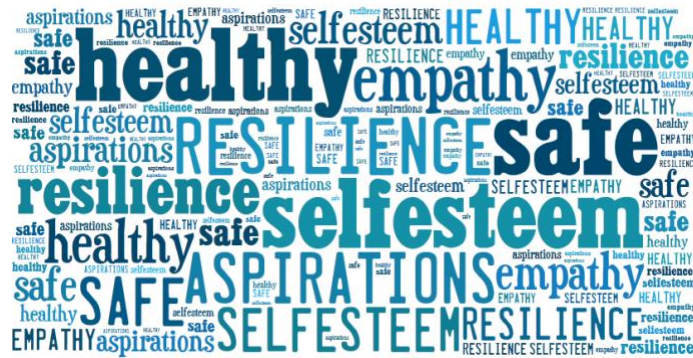
In Early Years, children will work towards achieving Early Learning Goals in Personal, Social and Emotional Education. These will be delivered through cross-curricular projects as outlined in our Early Years Curriculum. They will also be delivered through structured playtimes, social times, visits, stories, videos and role play.

In Key Stage 1, children will learn about themselves as developing individuals and as members of their communities, building on their own experiences. They will learn the basic rules and skills for keeping themselves healthy and safe, behaviour, taking care of their mental health whilst being provided with opportunities to show they can take responsibility for themselves and their environment. As members of a class and school community, they will learn social skills such as how to share, take turns, play, help others, resolve simple arguments and combat bullying.

In Key Stage 2, pupils will learn about themselves as growing and evolving individuals with their own identities within their communities. All children will learn about the wider world and the interdependence of communities within it. They will be encouraged to develop a sense of social justice and moral responsibility and begin to understand that their own choices and behaviour can affect personal, local, national or global issues and political and social institutions.

Our Children's Charter

We champion each child at Manor to gain entitlement to:



- stay safe and healthy, build self-esteem, resilience and empathy
- raise aspirations for all individuals
- embrace the Fundamental British Values of Democracy, rule of law, individual liberty, mutual respect for and tolerance of those with different faiths and beliefs and for those without faith
- develop a deeper sense of their individual identity
- reflect on their own beliefs and behaviour

Inclusion:

At Manor Primary, we believe that all children are entitled to a broad, balanced and current curriculum, ensuring all children are able to access the curriculum. We encourage all of our children to achieve their full potential and to be fully involved in both the social and academic life of school. Educational experiences are provided that consider the individual needs of our children.

When planning for teaching and learning in PSHCE, we contemplate the wide range of abilities of our children. Teachers set high expectations for all pupils and will use appropriate assessment to set ambitious targets and plan thought provoking learning opportunities for all groups.

Teachers ensure that pupils with SEN and/or disabilities can study all aspects of PSHCE and ensure that there are no barriers to every pupil achieving. Teachers will implement reasonable adjustments so that every SEND child can fully access all aspects of the PSHCE curriculum.

Teachers will also take account of the needs of pupils whose first language is not English.

Our Curriculum Impact

At Manor Primary School, through our PSHCE curriculum, we are empowering children to acquire knowledge, demonstrate integrity and develop a richer understanding of what they need for their future to thrive as individuals. Our curriculum celebrates the diversity of all of our children and strives to celebrate the rich tapestry within our community and beyond; we encourage all to recognize that each child is individual and unique and that they have a great potential that we, as educators, need to unlock. Our school motto is 'Find your wings and fly' and through our curriculum, we enable this to happen.

Our curriculum is designed to create outstanding progress for all pupils, regardless of their starting points, over time. Planned learning opportunities (verbal, discussions, role play, creative, written, etc.) will progressively build on prior knowledge and understanding and support children in producing outcomes of exceptional quality.

We will ensure that the curriculum is regularly monitored and reviewed. Senior leaders, middle leaders, subject leaders and our children will review individual subjects. The learning and outcomes will be monitored, and feedback will be given around strengths within the curriculum and ways we can further enrich the curriculum.

Our teacher assessment framework of building blocks will be used by the children and staff to reflect on the progress that is being made over time. All leaders will evaluate progress that has been made and the impact of the curriculum to ensure all pupils, including the most disadvantaged and pupils with SEND have been given the knowledge and cultural capital they need to succeed in life.

The quality of education in PSHCE will be evaluated to ensure that it enables children to achieve the highest standards and supports them in being confident, resilient, self-motivated independent learners with the skills to be a lifelong learner.

Breach of Policy

Any breaches of this Policy will be managed under the Trust's Disciplinary Policy and Procedure, which can be located in the All MAT Staff area on Teams